

CamON Project in Breast Cancer

Clinical Perspective

Luis Manso MD, PhD
Breast & Gynaecologic Cancer Program
Medical Oncology Division
12 de Octubre University Hospital.



Disclosures

- ❑ Employment: Hosp. Univ. 12 de Octubre
- ❑ Consultant or Advisory Role: Lilly, Tesaro, Astra-Zeneca, Roche, Novartis, Pfizer, Celgene,
- ❑ Research Funding: Tesaro
- ❑ Speaking: Lilly, Roche, Astra-Zeneca, Novartis, Pfizer

TOPICS

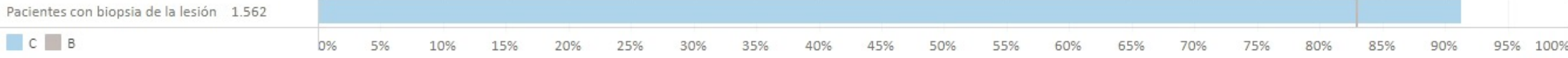
- Introduction CamON Project: Breast Cancer Dashboard.
- Concept: Prevalence of HER2 low BC.

Filtros de paciente

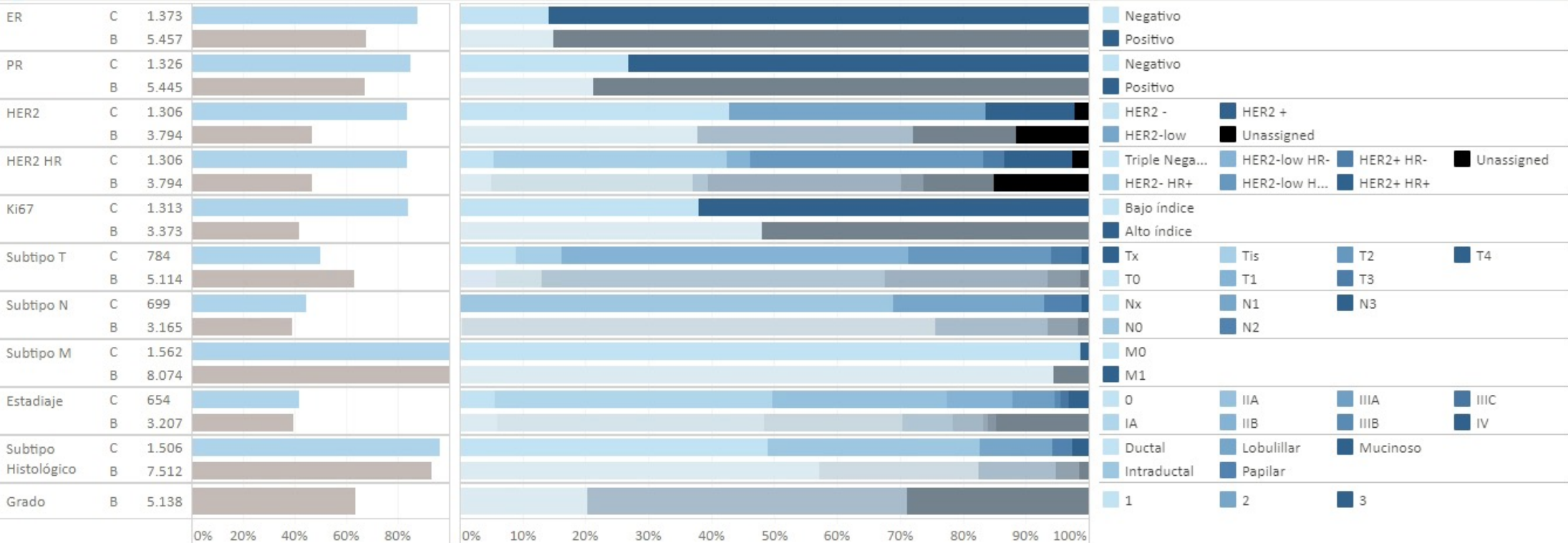
Año de diagnóstico (Todo)	Servicio de CEX (Todo)	Año última visita especialista (Todo)	Edad al diagnóstico (Todo)	Metastásicos (Todo)	Años de seguimiento (Todo)
Subtipo ER (Todo)	Subtipo PR (Todo)	Subtipo HER2 (Todo)	Subtipo Ki67 (Todo)	Subtipo T (Todo)	Subtipo N (Todo)

Nº pacientes: Centro: 1.710 ; Benchmark: 9.741

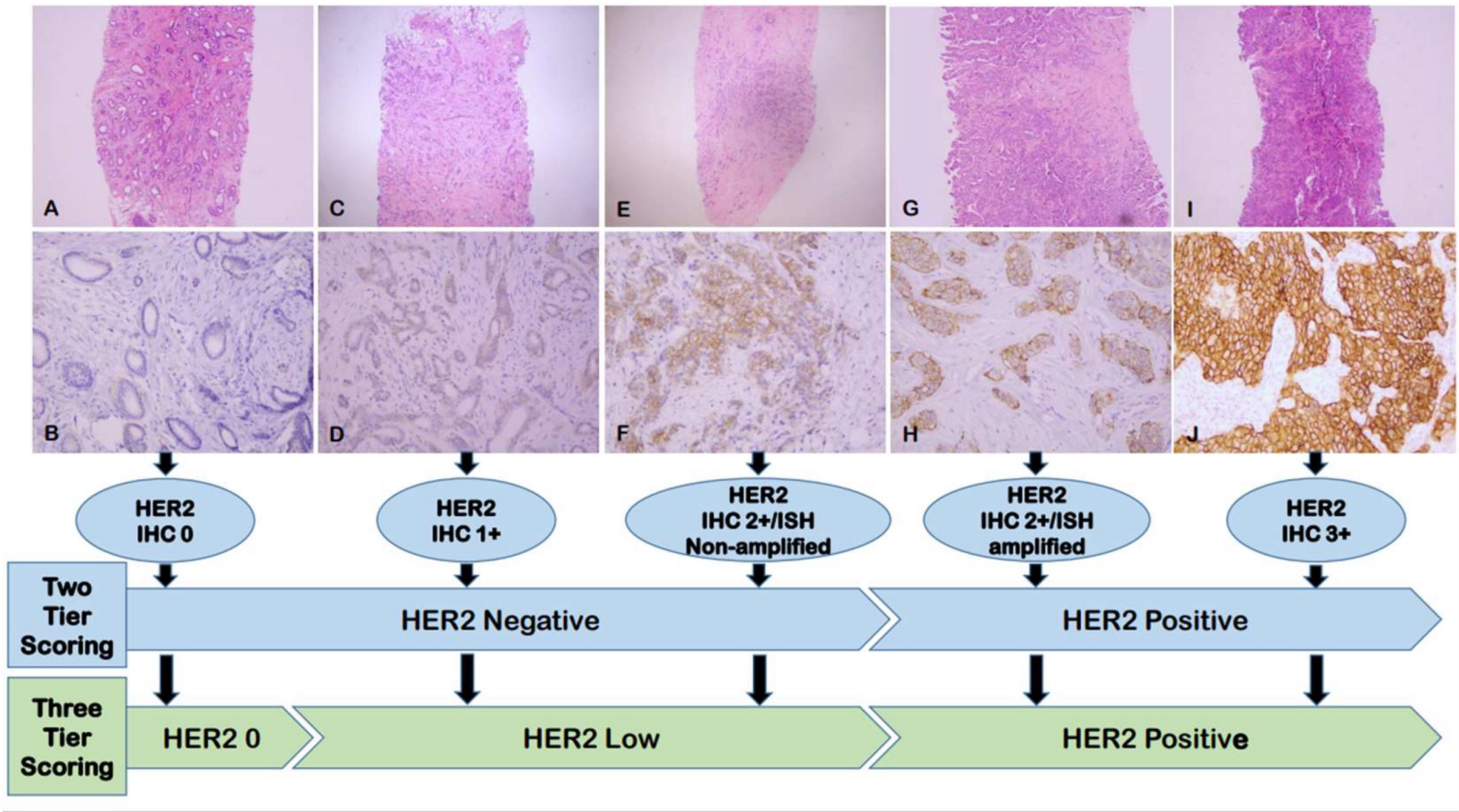
Pacientes con biopsia de la lesión



Tipología

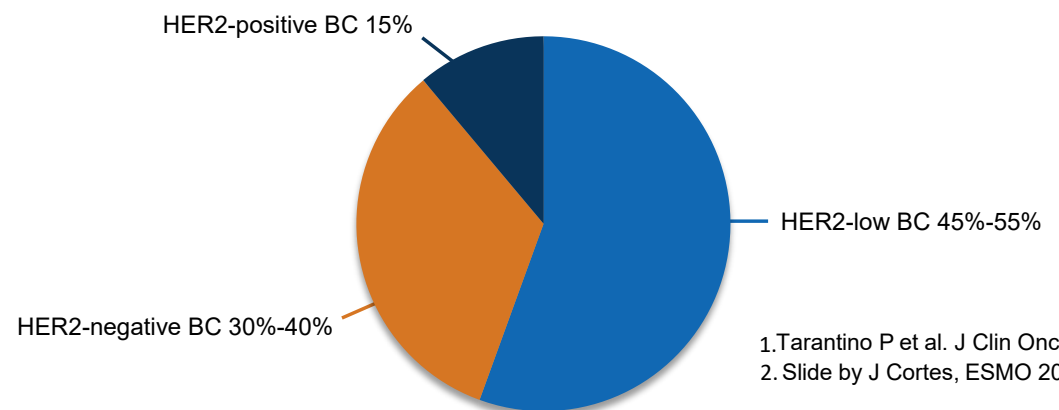


Prevalence of HER2-low BC



Background

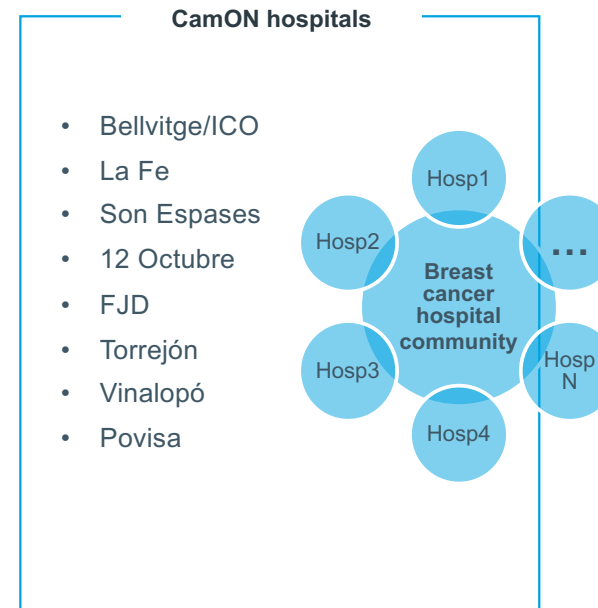
- New nomenclature has been proposed for the cases with HER2 IHC 1+ or 2+ with negative ISH—namely, HER2-low BC¹⁻².
- About 50% of breast cancers are HER2-low according to the current definition¹⁻².
- The frequency of this subtype in the real-world setting is yet unclear.



1. Tarantino P et al. J Clin Oncol. 2020.
2. Slide by J Cortes, ESMO 2023

OBJECTIVES

- Describe the prevalence of HER2-low subtype and HR status in patients with BC in a cohort of 6 hospitals in Spain.
- Assess (if any) differences in survival among groups.

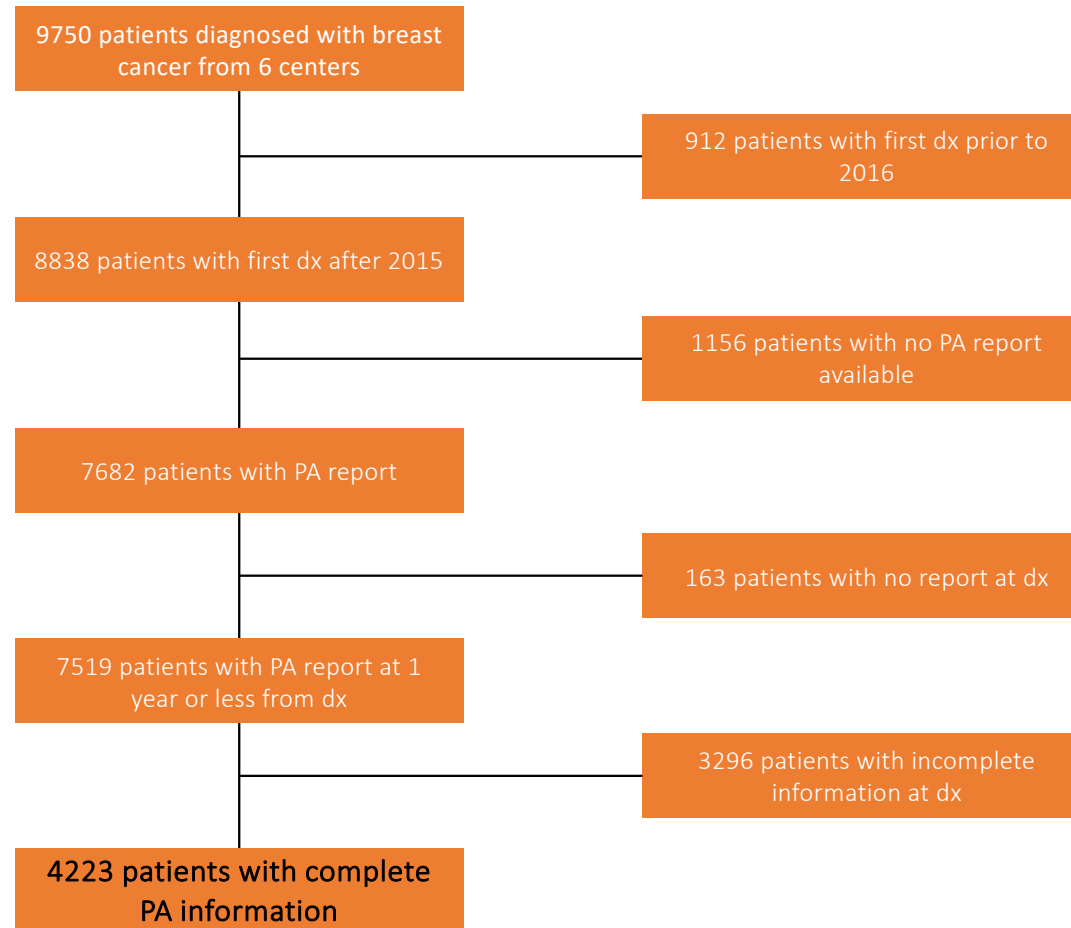


METHODS

- Observational, multi-center study, including all patients diagnosed with BC at 6 major-size general hospitals from January 2016 through April 2023 (N=9,750).
- Patients were identified using ICD-9/10 and SNOMED BC codes.
- Data obtained from the CamON hospital network database

RESULTS

Inclusion and patient selection criteria



*PA = Pathological Anatomy

RESULTS

Traditional classification (without HER2-low)

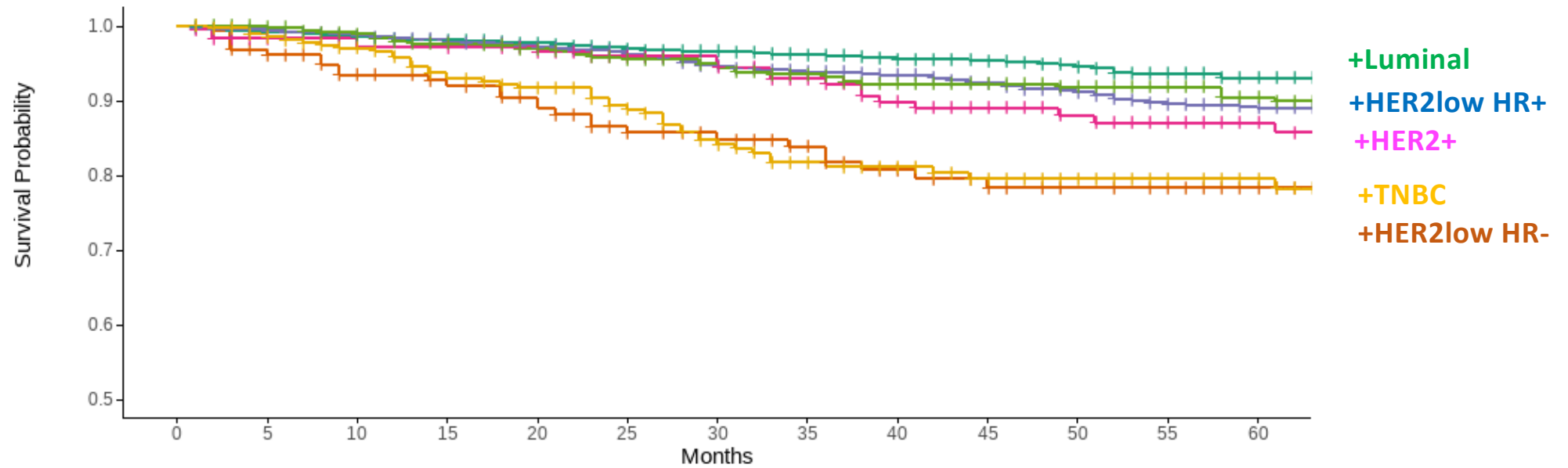
Category	Valid N	Subcategory	Volume	Percentage
HER2 HR Classification	4223	HER2+ HR+	447	11%
		HER2+ HR-	182	4%
		HER2- HR+	3165	75%
		Triple Negativo	429	10%
		Unassigned	60	

Updated classification

Category	Valid N	Subcategory	Volume	Percentage
HER2 HR Classification	4223	HER2+ HR+	447	11%
		HER2+ HR-	182	4%
		HER2-low HR+	1479	35%
		HER2-low HR-	157	4%
		HER2-0 HR+	1686	40%
		Triple Negativo	272	6%
	Unassigned	60		

RESULTS

Real World Overall Survival according to HER2 HR groups



Strata	Number at risk												
	0	5	10	15	20	25	30	35	40	45	50	55	60
Classification=HER2- HR+	1679	1634	1561	1468	1384	1272	1144	1024	924	808	681	553	444
Classification=HER2-low HR-	157	148	133	125	116	104	94	85	74	67	57	51	42
Classification=HER2-low HR+	1477	1414	1353	1291	1197	1099	976	882	832	728	635	541	451
Classification=HER2+ HR-	180	169	165	163	156	142	133	123	110	99	87	80	68
Classification=HER2+ HR+	447	432	414	389	370	353	330	302	280	253	231	208	178
Classification=Triple Negative	272	262	243	226	209	181	151	126	112	98	88	74	62

CONCLUSIONS

- 1st observational, RWE, multi-centre study in Spain, exploring the prevalence of HER2low BC.
- High prevalence of HER2-low subtypes among patients diagnosed with BC (35% HR+ and 4% HR-).
- Differences in rwOS were observed across HER2 HR groups.
- rwOS Her2-low HR- BC = TNBC.
- Prevalence reported in previous studies ranged between 31 and 51% (Agostinetti et al 2021; Zhang et al 2022).

CONCLUSIONS

Limitations

- There is a relatively high proportion of missing data in the form of pathology reports.
- Only six hospitals provided data for this specific analysis. However, the hospitals involved have broad coverage of some of the most populous regions in Spain.

ACKNOWLEDGMENTS

Ramon Burgos

ES-HEOR & Pricing Manager Oncology, Daiichi Sankyo

Carles Illa

Director

Healthcare / Payor, Provider & Government IQVIA

